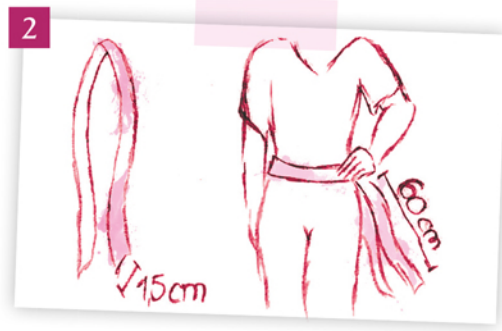




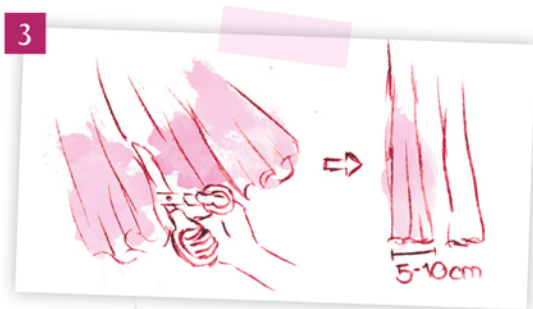
create your tutu



Use 2-4 meter for a small tutu children size & 5-7 meters to make a medium size tutu.



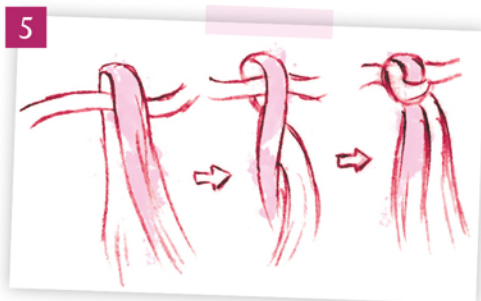
Choose a band of at least 1,5 cm width, wireless and in a color as you wish. Wrap it around your waist and add 60cm before cutting.



Unfold the netlace and cut in stripes 5-10cm width. If you wish more volume, use wider stripes. To have a tighter fit use smaller stripes.



To attach the netlace stripes to your waistband, they need to be folded in half. You will have a loop on one side and two loose ends on the other.



Fold your stripes centered and lay it over the upper edge of your waistband. Wrap the edges around the band and pull them through the loop. You create a classical knot.



Attach all your folded stripes around the band via the knot, pull them tight. Push your knitted stripes close to each other.



The band needs 30 cm on each side to work as a closure for your skirt. Having fixed enough netlace stripes to your liking your tutu is finished!



Proudly wear your tutu around your waist tightened with a bow in the back.