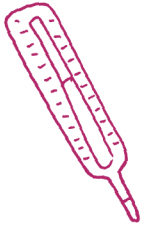


# Dollhospital



Admission



Please enclose the admission form to your doll, so we can help the best possible way.

Important: To estimate the cost of her treatment ( guarantee or chargeable) your doll must have arrived at our hospital, so that our doctors can do a health check.

Your name\* \_\_\_\_\_

Street\* \_\_\_\_\_

Zip code\* \_\_\_\_\_

City\* \_\_\_\_\_

Emailadress\* \_\_\_\_\_

mobile#\* \_\_\_\_\_

Doll´s name \_\_\_\_\_

Birthday (date purchase ) \_\_\_\_\_

your dolls injury \_\_\_\_\_

\_\_\_\_\_

\_\_\_\_\_

After your doll arrived at the dollhospital, we will send a message to your parents that it has arrived safely with us. After that we will check your doll thoroughly and send you an email, in which we explain what the necessary treatments are in our dollhospital and whether these would be free or chargeable. In this email you also have the opportunity to release the treatment. As soon as your doll is healthy, we will send it safely back to your home!

Your dollhospital team at Götz